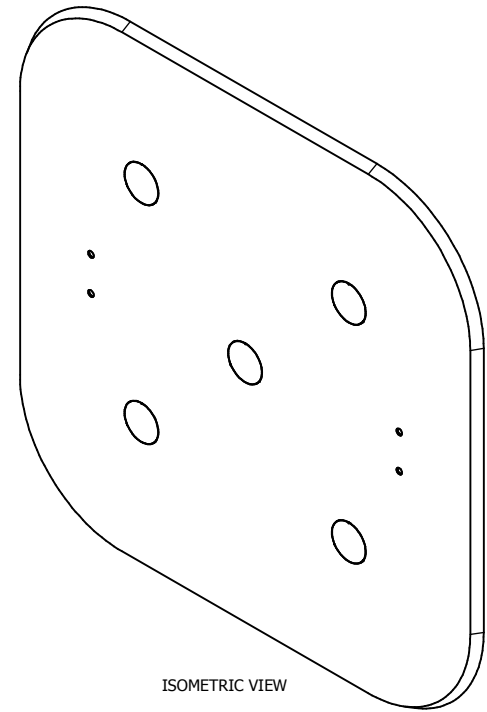
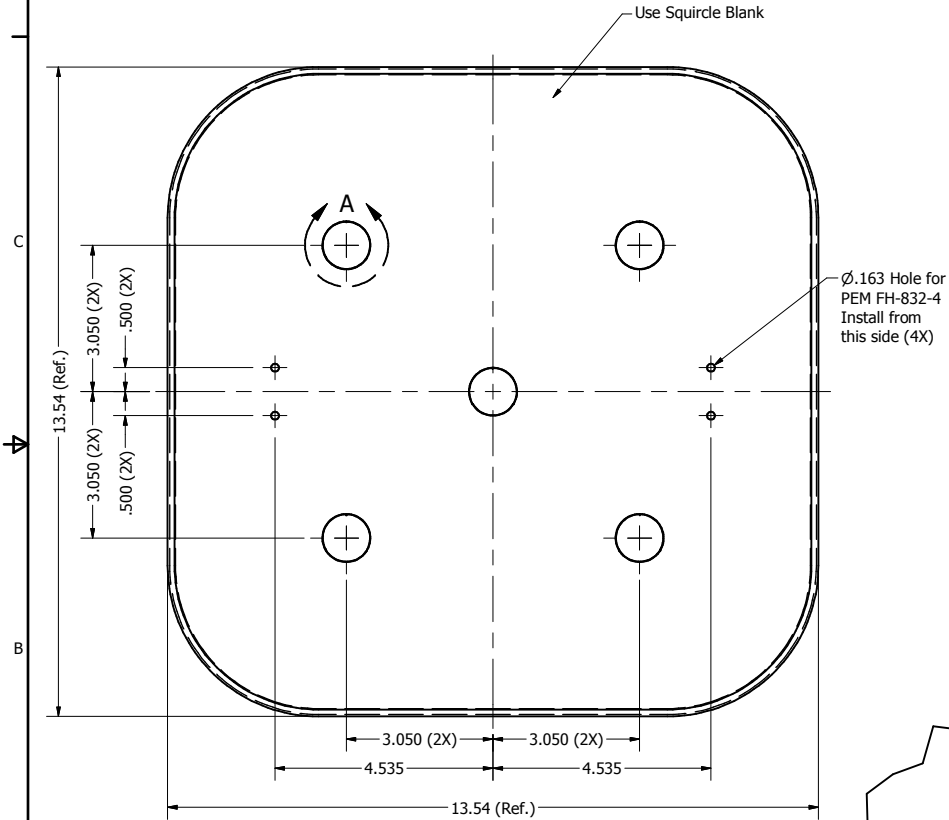
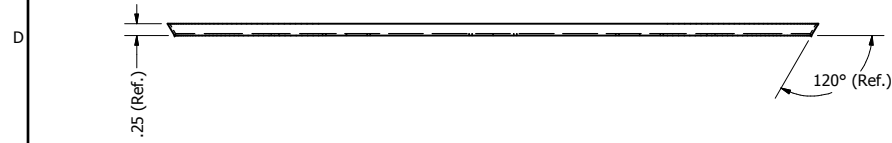
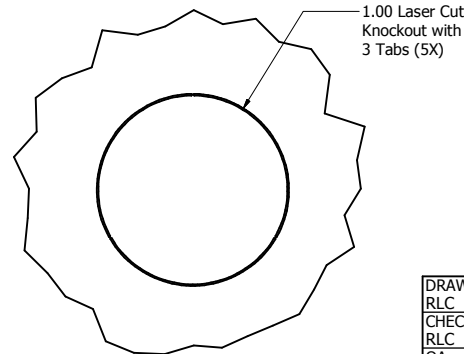


| REVISION HISTORY | | | | |
|------------------|-----|-------------|-----------|----------|
| ZONE | REV | DESCRIPTION | DATE | APPROVED |
| All | 1 | Released | 8/22/2017 | RLC |



ISOMETRIC VIEW

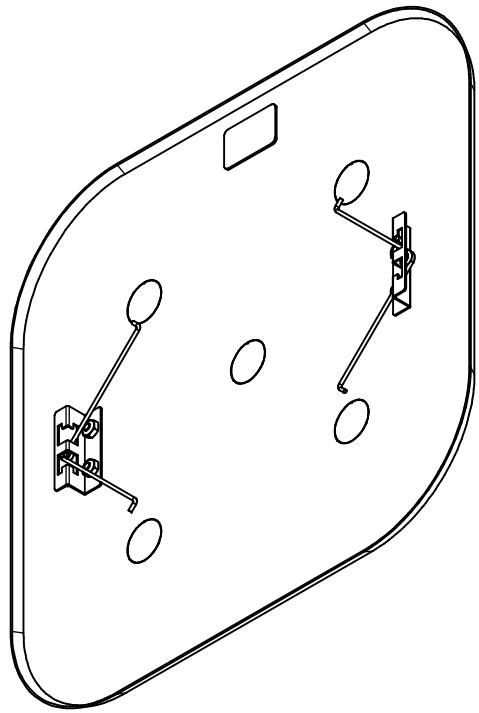


DETAIL A
SCALE 2 : 1

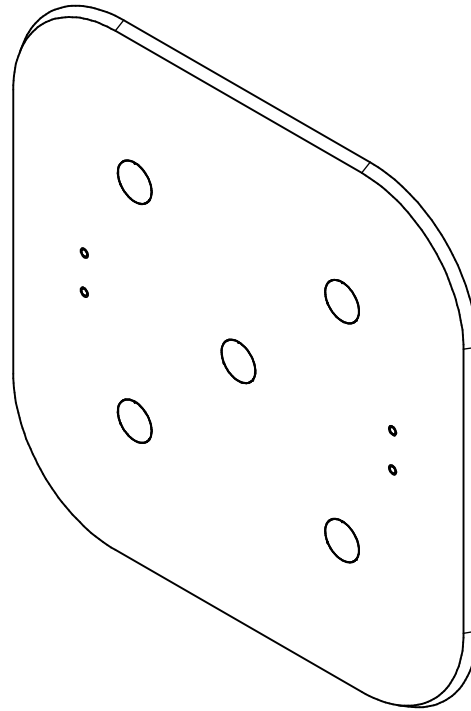
NOTE:
 - Material: 20 GA. Steel
 - Finish: Cardinal C031-WH120 Powder Coat
 - Color: White Texture Semi-Gloss

NOTE: All materials used in the construction of Oberon products must be RoHS compliant and meet RoHS2 Directive 2011/65/EU. Contact Oberon engineering if RoHS compliant materials are not available.

| | | | | |
|------------|-----------------|-----------|--|------------------|
| DRAWN | RLC | 8/22/2017 | Oberon, Inc. - 1315 S. Allen St. - State College, PA 16801 | |
| CHECKED | RLC | 8/22/2017 | TITLE | |
| QA | | | Antenna Mount Trim | |
| MFG | RLC | 8/22/2017 | SIZE | DWG NO |
| APPROVED | RLC | 8/22/2017 | C | 37-104X-ANTMNT-S |
| TOLERANCE: | .0 = +/- .030 | | SCALE | REV |
| | .00 = +/- .015 | | | 1 |
| | .000 = +/- .005 | | SHEET 1 OF 2 | |



BACK VIEW



FRONT VIEW

| | | | | |
|------------|-----------------|-----------|--|------------------|
| DRAWN | RLC | 8/22/2017 | Oberon, Inc. - 1315 S. Allen St. - State College, PA 16801 | |
| CHECKED | RLC | 8/22/2017 | TITLE | |
| QA | | | Antenna Mount Trim | |
| MFG | RLC | 8/22/2017 | SIZE | DWG NO |
| APPROVED | RLC | 8/22/2017 | C | 37-104X-ANTMNT-S |
| TOLERANCE: | .0 = +/- .030 | | SCALE | REV |
| | .00 = +/- .015 | | | 1 |
| | .000 = +/- .005 | | | SHEET 2 OF 2 |