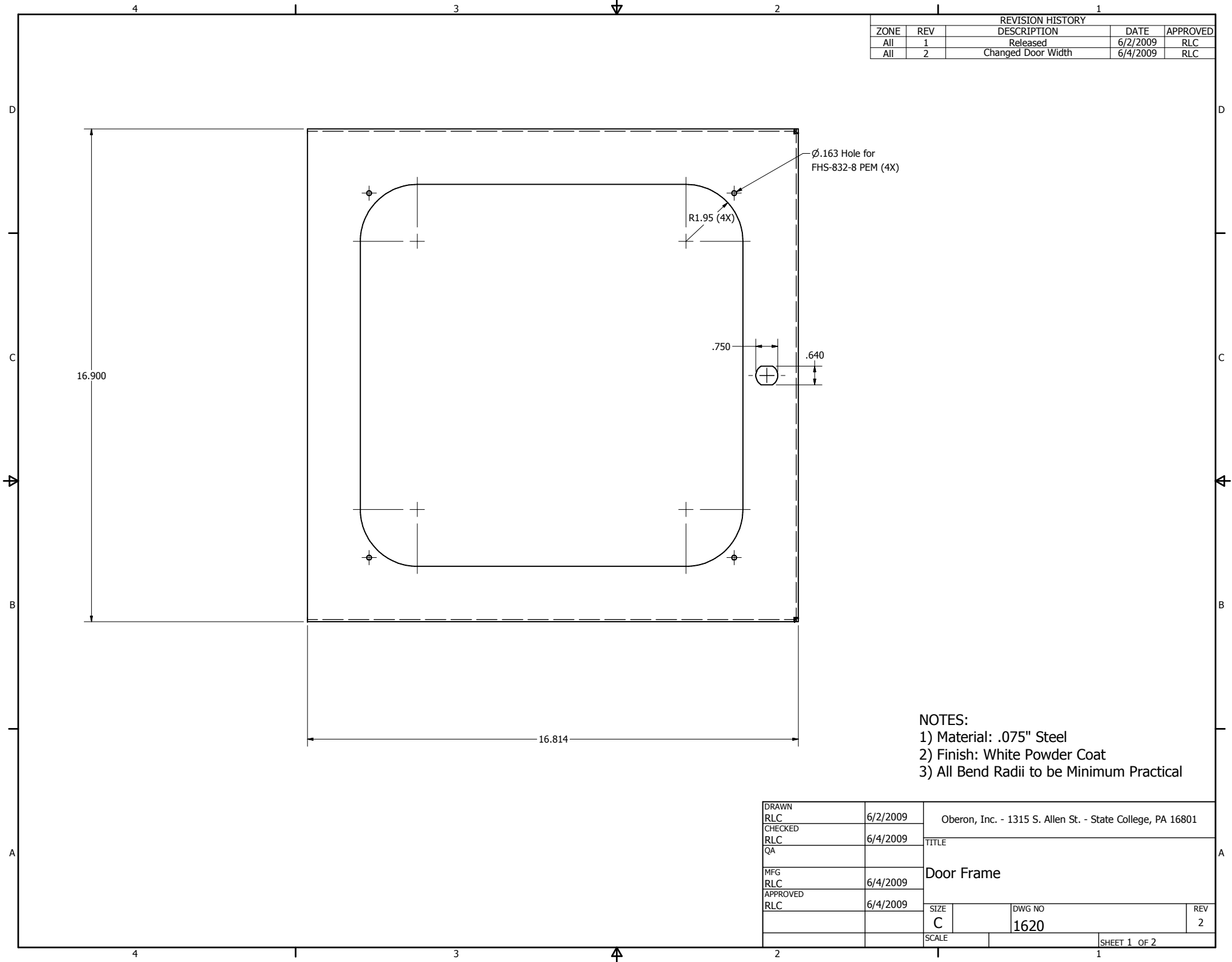


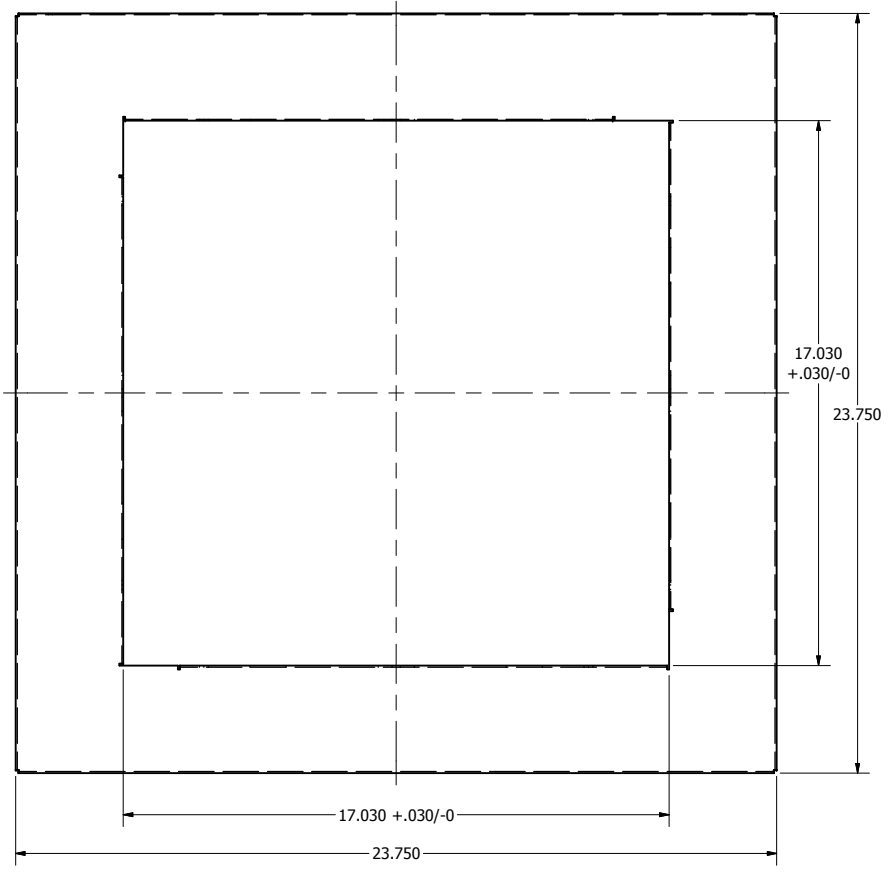
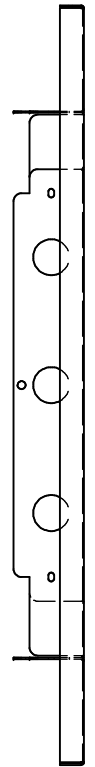
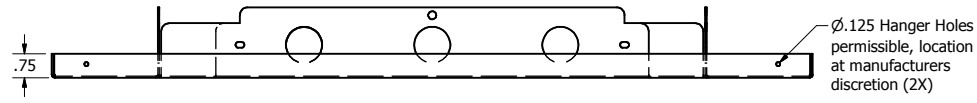
REVISION HISTORY				
ZONE	REV	DESCRIPTION	DATE	APPROVED
All	1	Released	6/2/2009	RLC
All	2	Changed Door Width	6/4/2009	RLC



- NOTES:  
 1) Material: .075" Steel  
 2) Finish: White Powder Coat  
 3) All Bend Radii to be Minimum Practical

DRAWN	6/2/2009	Oberon, Inc. - 1315 S. Allen St. - State College, PA 16801		
CHECKED	6/4/2009	TITLE		
QA		Door Frame		
MFG	6/4/2009	SIZE	DWG NO	REV
RLC		C	1620	2
APPROVED	6/4/2009	SCALE	SHEET 1 OF 2	
RLC				

REVISION HISTORY				
ZONE	REV	DESCRIPTION	DATE	APPROVED
All	1	Released	6/3/2009	RLC
All	2	Added tolerance to internal opening and moved obround hole location	6/5/2009	RLC
All	3	Changed part number from 1624 to 1632 due to duplicate part numbers	6/17/2009	RLC
Pg 2, D3	4	Added radius dimensions and hole location dimension	6/23/2009	RLC
D2	5	Added .125" dia. hanger holes	7/17/2009	RLC



NOTES:  
 Material: .048" Steel  
 Finish: White Powder Coat

DRAWN	6/3/2009	Oberon, Inc. - 1315 S. Allen St. - State College, PA 16801		
CHECKED	7/17/2009	TITLE		
QA		Model 1030-00 Flange		
MFG	7/17/2009	SIZE	DWG NO	REV
RLC		C	1632	5
APPROVED	7/17/2009	SCALE	SHEET 1 OF 2	
RLC				