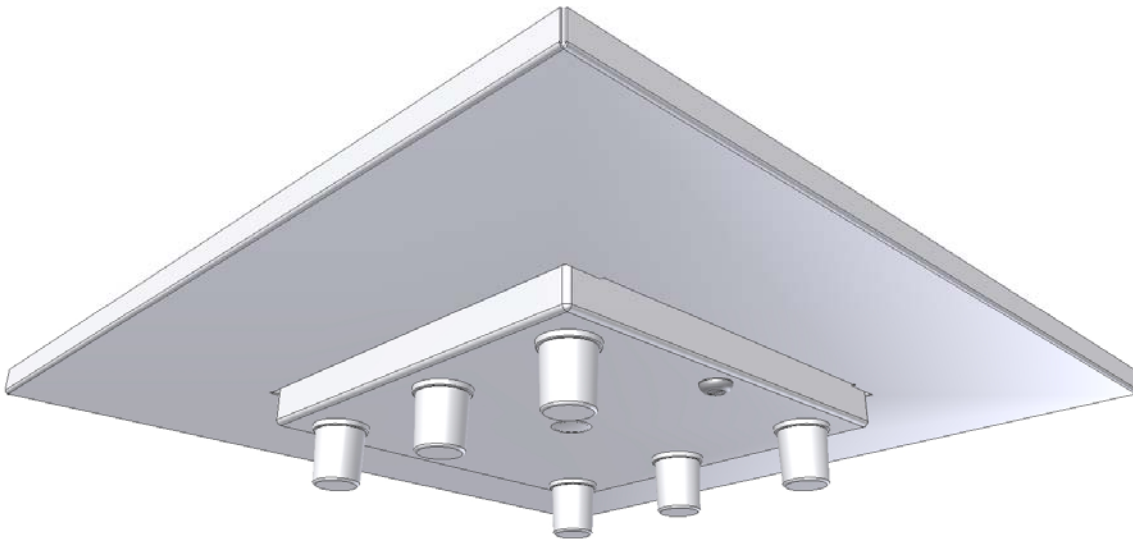


Oberon's model 1052-00 wireless LAN access point enclosure is a locking 2' x 2' ceiling tile enclosure originally designed for the Cisco 1242, Cisco 1232, and Aruba Networks AP-70 access points. With many Cisco customers making the migration from the Cisco 1242 to the Cisco 1260 or 3500e series "connectorized" 802.11n wireless access point, Oberon has designed the 38-1052-ADPDOOR-3500e adaptor door so that customers may install the new access point in the existing enclosure, without removing the enclosure from the ceiling. This adaptor door provides clearance for the access point and antenna connectors and cables. The upgrade simply requires that the existing 1052-00 door is removed (three interior nuts), the new access point is installed into the enclosure, the new door is attached to the enclosure, and antennas are attached to the door. The upgrade maintains the enclosure's UL 50 design criteria, and provides the same level of physical security as previously provided. Upgrades are performed without accessing the air handling space above the ceiling. Note that this adaptor door is only required on 1052-00 rev. 11 (3.25" deep) or prior 1052-00 enclosures. Rev. 12 (4.5" deep) and later 1052-00s are deep enough for these connectorized access points.



1) Model 1052-00 shown with 38-1052-ADPDOOR-3500e adaptor door and Oberon 35-ZDUAL antennas (not included)

### Specifications:

- Adaptor door designed to permit the Cisco 1260/3500e series "connectorized" 802.11n wireless access point to be installed into existing Oberon Model 1052-00 ceiling tile enclosures
- With adaptor door properly installed, the assembly is UL listed and designed to meet NEC300-22 and 300-23 for plenum installations
- Construction: textured white powder coated steel
- Fully hinged locking door, keyed alike
- Adaptor door is attached to enclosure with three nuts